



2015

about **SACCON**



Codognè (Treviso)
head plant

The drive to innovate and search for new challenges has made SACCON well-known and recognised also in the field of flexible cables, agricultural and healthcare machine parts, components for light-vehicle braking systems and pushchairs.

Nowadays, SACCON makes use of the technology acquired after years of experience and tangible results achieved by the continuous innovation of products and production systems.

Many decades of know-how give the SACCON development team the background to produce a wide range of products for their customers: from plastic to aluminium alloys and sheathed cables to the production of custom-designed flexible systems.

SACCON's philosophy aims at working together with customers, offering customers the support of the company's technical staff for the design of new products in order to transfer our experience to Your product.



All new SACCON products are subject to test bed trials in the R&D department to fulfil the corresponding guarantee certification requirements.

Technical support, quality and service have always been key factors in the cooperation between SACCON and its customers.

Using experience on cable production achieved in lot of field sectors SACCON open in Wuxi the chinese cable plant in cooperation with our partner JIANGYIN CHIVER CABLES co. LTD.

WCS - Wuxi Chiver Saccon Cables co. LTD - is the reference for any asian and european customers for a wide range of cables products.



Wuxi Chiver Saccon Cables co. LTD
Jiangyin city, Jiangsu, China plant

SACCON brand was born in 1981 from the ideas, the willingness and the passion of its founder, Floriano Saccon.

The first product was an innovative bicycle sheet lever, which allowed it to be mounted to the handlebar without welding.

Since then, the SACCON brand has gained recognition in the field of bicycles through the permanent development of innovative products that meet the requirements of the sector.



Quarto d'Altino (Venezia)
plastic division plant



product range



22



Alloy lever



standard lever stroke **25mm**

art. L370A4W3R0 right

art. L370A4W3L0 left

art. L370A4W3P0 pair

standard lever stroke **19mm**

art. L369A4W3R0 right

art. L369A4W3L0 left

art. L369A4W3P0 pair



hinged clamp design



park lever stroke **25mm**

art. LK370A4W3R0 right

art. LK370A4W3L0 left

art. LK370A4W3P0 pair

park lever stroke **19mm**

art. LK369A4W3R0 right

art. LK369A4W3L0 left

art. LK369A4W3P0 pair



park device behaviour

brake and parking lever - LK

The LK high points:
2 different cable way out configurations (36° & 80°)
clamp to fix on ø 20, 21, 22, 25 and 28mm tubes
available with cable adjuster (2 versions)
compatible with LP & LR integration (opt. P)
nipple for double head cables (opt. B)
color configurable
symbol logo optional print

Two black automatic parking devices are shown against a white background. The device on the left is a standard model with a black handle and a black mounting bracket. The device on the right is a '36° way out version' and features a red adjuster lever on its handle. Both devices have a threaded rod at the end of the handle for attachment to a vehicle's parking brake.

36° way out version
 with adjuster
 automatic parking device
 bra free p

with adjuster
80° way out version

art. LK0801 ø20
art. LK0811 ø21
art. LK0821 ø22
art. LK0851 ø25
art. LK0881 ø28

A black, adjustable, 80-degree spreader tool. It features a curved handle with a textured grip and a metal tip. The tool is shown in a spread position, with the handle and tip forming an 80-degree angle. The tool is made of black plastic and metal. The handle has a textured grip and a metal tip. The tool is shown in a spread position, with the handle and tip forming an 80-degree angle. The tool is made of black plastic and metal.

automatic parking device		brake lever and free parking device
art. LK2601	ø20	art. LK1601
art. LK2611	ø21	art. LK1611
art. LK2621	ø22	art. LK1621
art. LK2651	ø25	art. LK1651

80° way out version with adjuster		
automatic parking device		brake lever and free parking device
art. LK2801	ø20	art. LK1801
art. LK2811	ø21	art. LK1811
art. LK2821	ø22	art. LK1821
art. LK2851	ø25	art. LK1851



cable stroke: 19 mm (80°), 10,5 mm (36°)

art. LK

--	--	--	--	--	--	--	--	--	--

brake lever - 0
brake lever + free parking device (3 pos.) - 1
automatic parking device (3 pos.) - 2
automatic parking device + safety button - 3
brake lever with automatic park safety button - 4
brake lever with enable & safety park button - 5*
brake lever + free parking device (1 pos.) - 7*
automatic parking device (1 pos.) - 8*
command lever with enabling device - 9*

code+B : special double head cable nipple option
code+I : with inside assembling Fork
code+P : LPV integration = without clamp
code+K : kid version with adj screw (opt if included)
code+T : TORX screws
code+V : M5x15 screws & inserted nuts
code+MC : electric Micro Normally Close
code+MO : electric Micro Normally Open

0 - without adjuster cable fitting
1 - with adjuster M7 free to turn
3 - with adjuster M7 threaded on bracket
6 - with ø7 hole on bracket
7 - with M7 thread bracket (no adjuster)

fix clamp a 20mm - 0
a 21mm - 1
a 22mm - 2
a 25mm - 5
a 28mm - 8
large clamp a 20mm - A
large clamp a 21mm - B
large clamp a 22mm - C
large clamp a 25mm - D

36° version - 6
80° version - 8

xx - optional logo
BLUE - blue lever color
RR - bracket RED handle RED
BR - bracket BLACK handle RED
WR - bracket WHITE handle RED

usable only on 80° version

(*) available only on 80^a version

LK - versions

art. LK0 standard brake lever



art.	option details
LK0611	36° + clamp ø21 + adj
LK0620	36° + clamp ø22 no adj
LK0820	80° + clamp ø22 no adj
LK0851	80° + clamp ø25 + adj

art. LK1 brake lever with manual parking device (3 steps)

to brake : simply pull the brake lever, the parking device do not engage
to park : pull the brake lever and engage the red device pushing it against the teeth
to release : pull the brake lever, the red device will disengage automatically



art.	option details
LK1611	36° + clamp ø21 + adj
LK1620	36° + clamp ø22 no adj
LK1820	80° + clamp ø22 no adj
LK1851	80° + clamp ø25 + adj

art. LK2 brake lever with automatic parking device (3 steps)

to park : pull the brake lever the parking device will engage automatically
to release : pull the brake lever and disengage the red device pulling it, release the brake lever and after release the red device

art.	option details
LK2611	36° + clamp ø21 + adj
LK2620	36° + clamp ø22 no adj
LK2820	80° + clamp ø22 no adj
LK2851	80° + clamp ø25 + adj



art. LK3 brake lever with automatic parking and safety device (3 steps)

to park : pull the brake lever, the parking device will engage automatically the safety device will engage automatically after the second step
to release : pull the brake lever and disengage the red device pulling it, pull the red button to disengage the safety device release the brake lever and after release the red devices

art.	option details
LK3611	36° + clamp ø21 + adj
LK3620	36° + clamp ø22 no adj
LK3820	80° + clamp ø22 no adj
LK3851	80° + clamp ø25 + adj



art. LK4 brake lever with automatic park-safety device (1 step)

to park : pull the brake lever, the park-safety device will engage automatically
to release : pull the brake lever and pull the red button, release the brake lever then the red device



art.	option details
LK4611	36° + clamp ø21 + adj
LK4620	36° + clamp ø22 no adj
LK4820	80° + clamp ø22 no adj
LK4851	80° + clamp ø25 + adj

art. LK5* brake lever with stroke limit,
extra stroke enable automatic park-safety device

to brake : pull the brake lever as usually, the parking device will not engage
to park : pull the brake lever, pull the black lever to disable the stroke limit
pull the brake lever till the park-safety device will engage automatically
to release : pull the brake lever and pull the red button,
release the brake lever and then the red device

art.	option details
LK5820	80° + clamp ø22 no adj
LK5820B	80° + clamp ø22 no adj + opt B
LK5821	80° + clamp ø22 + adj



art. LK7* brake lever manual parking device (1 step)

to brake, to park and to release see LK1 details



art.	option details
LK7820	80° + clamp ø22 no adj
LK7851	80° + clamp ø25 + adj

art. LK8* parking lever automatic device (1 step)

to park and to release see LK2 details



art.	option details
LK8820	80° + clamp ø22 no adj
LK8851	80° + clamp ø25 + adj

art. LK9* command lever with enable device

locked position : the lever can not move without enabling operation
to enable action : pull the enabling device to enable pull action
to release : release the lever, the enabling device
will lock the lever in locked position



art.	option details
LK9820	80° + clamp ø22 no adj
LK9851	80° + clamp ø25 + adj

enable action

* LK5, LK7, LK8 and LK9 are available only on 80° way out version

LK - options



option F

when lever have to be safely installed
inside plastic fork device
avoid involuntary disassembly of lever

compulsory with option MO & MC and with option K



option B
special nipple option for double head cable
when a double head cable is used
a special nipple version is available
on all versions LK1, LK2, LK3, LK4 and LK5
on 36° and 80° versions



art. LK2821B



art. LK1820MC



casing termination

is possible have 3 solution on casing fitting
code ...0 without adjuster
code ...7 built in M7 thread on plastic bracket without adjuster
with adjuster
code ...1 on ø7 hole: adjuster not lockable on position
code ...3 on M7 thread: adjuster lockable on position

option MC - normally close

option MO - normally Open

to enable / disable electrical devices
when mechanical brakes are pulled
ex.: switch off electrical motors
ex.: switch on rear stop lamps

option V

nuts on bracket
M5x16 stainless screws
for screw/unscrew
frequent operations



art. LK0820V



screw option

art. LK0820 standard PH screw head

art. LK0820T Torx screw head

art. LK0820V M5 stainless steel screws

Standard colors are the following:

- brake lever, bracket and clamp (all versions)
- park device (LK1 LK2 LK3 LK7 LK8)
- safety button device (LK3 LK4 LK5)
- stroke limit device (LK5)

any other colour configuration is possible on demand

: BLACK
: RED (BLACK on demand)
: RED
: BLACK (RED on demand)

standard

Torx screw

optional large clamp
improved design & handling comfort
with larger design clamp
on ø20, ø21, ø22 and ø25



art. LK06A0 ø20
art. LK06D0 ø25

art. LK16A0 ø20
art. LK16D0 ø25

option P
to make a compact console
the LK serie could be fixed together
with the LPV... lever



art. LK1621P

art. LPV2C0



art. LPV200

art. LK0820P

customizable colors
art. LK9850BV.BLUE



optional K screw adjuster
lever adjust screw + inside fork device
to adjust lever position



LP - GAS PUMP lever



The LP is the gas pump command lever.
Combining design, functionality and fixing facilities
the LP gives lot of opportunities with gas pump servo systems.
The LP moves one gas pump directly
or with a stroke duplicator two gas pumps.

The LP series high points:
clamp to fix on $\varnothing 21$, $\varnothing 22$, $\varnothing 25$ and $\varnothing 28$ mm tubes
cable adjuster available 2 versions
available with accessories
compatible for LP, LR and LK integration
symbol print option



with special clamp
(screws from bracket)
art. LPR100 $\varnothing 21$
art. LPR200 $\varnothing 22$
art. LPR500 $\varnothing 25$



with standard clamp
(screws from clamp)
art. LPF100 $\varnothing 21$
art. LPF200 $\varnothing 22$
art. LPF500 $\varnothing 25$



screws from bracket
(without clamp)
art. LPV100 $\varnothing 21$
art. LPV200 $\varnothing 22$
art. LPV500 $\varnothing 25$



without clamp
without screws
art. LP0100 $\varnothing 21$
art. LP0200 $\varnothing 22$
art. LP0500 $\varnothing 25$

art. LP 	
clamp type	(standard) fixing clamp - F special reverse clamp, screws from support - R no clamp, screws from support - V special clamp for big frames - T no clamp no screws - 0
fix clamp	$\varnothing 21$ mm - 1 $\varnothing 22$ mm - 2 $\varnothing 25$ mm - 5 $\varnothing 28$ mm - 8
ref. code for T version	$\varnothing 32$ - C
	code + T : TORX screws code + V : M5x16 screws + inserted nuts
	0 - standard 1 - with M6 adjuster free to turn 3 - with M7 adjuster & thread bracket 7 - with M7 thread bracket (no adjuster)
	..xx - optional logo ..BLUE - blue ..RR - bracket RED handle RED ..BR - bracket BLACK handle RED ..WR - bracket WHITE handle RED
	option cable fitting



cable stroke: 15 mm

RELEASE lever - LR

The LR is the new command lever shorter than the LP.

The LR due to it stronger structure is studied for activate any mechanical release device.

The LR series high points:

clamp to fix on $\varnothing 21$, $\varnothing 22$, $\varnothing 25$ and $\varnothing 28$ mm tubes
cable adjuster available 2 versions
available with accessories
compatible for LP, LR and LK integration
direct symbol print option



With LR serie ø5x6,5 cable head
is recommended to use



with special clamp
(screws from bracket)

art. **LRR100** ø21
art. **LRR200** ø22
art. **LRR500** ø25



screws from bracket
(without clamp)

art. LRV100 ø21
art. LRV200 ø22
art. LRV500 ø25



with standard clamp
(screws from clamp)

art. **LRF100** ø21
art. **LRF200** ø22
art. **LRF500** ø25

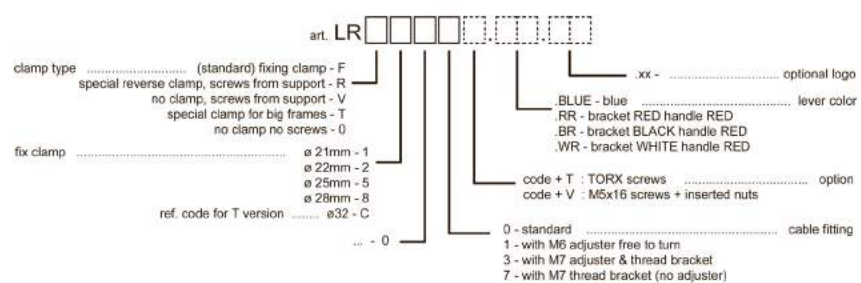


without clamp
without screws

art. LR0100 ø21
art. LR0200 ø22
art. LR0500 ø25



cable stroke: 15 mm



LP LR - options

art. LPV2C0



art. LK1621P

Adjuster options

art. LPF201 M6 adjuster free to turn

art. LPF203 M7 adjuster thread bracket

art. LPF207 M7 built in thread w/o adjuster



art. LRV200



art. LP0200



customized color

art. LPF500.RR

direct print logo option

to identify safely
the function of the handle
to avoid user wrong activation



art. LRF203V



option V

nuts on bracket
M5x16 stainless screws
for screw/unscrew
frequent operations

option T Torx screw

art. LPF200T



screw option

art. LPF200 standard PH screw head

art. LPF200T Torx screw head

art. LPF200V M5 stainless steel screws

standard

Torx screw



with special clamp for big frames

art. LPTC00 ø32

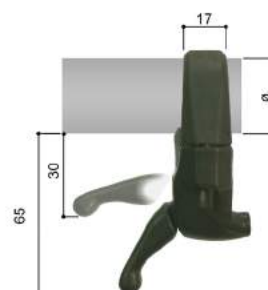
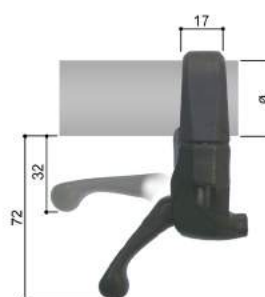
art. LPTC01 ø32 & adjuster



with special clamp for big frames

art. LRTC00 ø32

art. LRTC01 ø32 & adjuster



new

alloy handle - **LGI**

*The LGi alloy handle perfectly combine design and functionality
designed for chairs or any interior design application*



art. LGI0400

new



partially activated



side view



back view

LMTV - VERTICAL TABLE handle

*The LMTO and LMTV are useful handle for gas pump application
or electric motor safety mechanical unlock.
The provide 1 or 2 devices simultaneous activation without any duplicator use.*

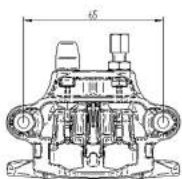
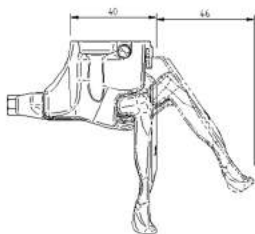
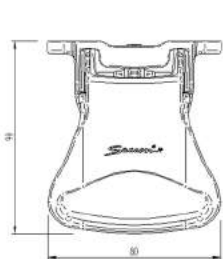
Is possible install cable automatic fitting or a traditional adjuster.



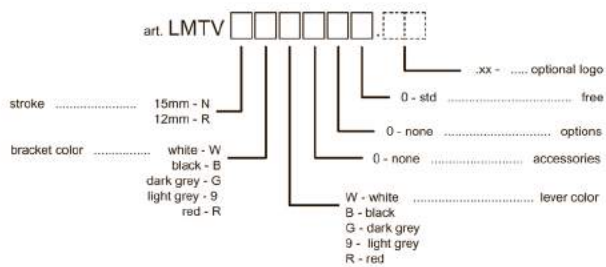
art. LMTVNR000.CPR



art. LMTVNWWW000



LMTV activation behaviour



*HORIZONTAL TABLE handle - **LMTO***



art. *LMTONWW000*



art. *LMTONRR000*



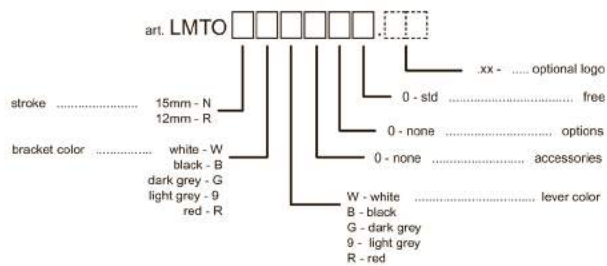
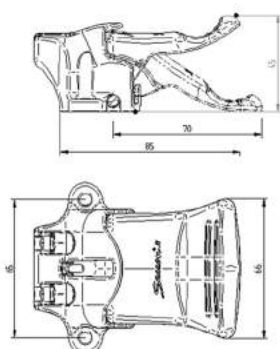
art. LMTONGG000



LMTO activation behaviour

The common stroke is 15mm
optionally a reduced stroke activation 12mm is available.

Quick to install using rivets or screws depending on application.



new

PBMC - mechanic PUSH BUTTON w/CLIP



PBM acts gas pumps quick release heads and every low force device with the simple press action of the main button.

Clip version si provided of a quick installation feature

Several versions, following specific performance, are available

art. PBMC5LA0

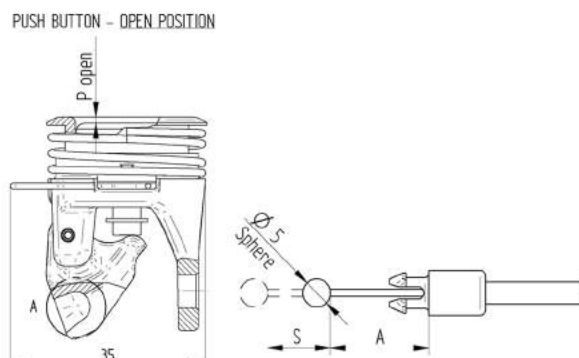
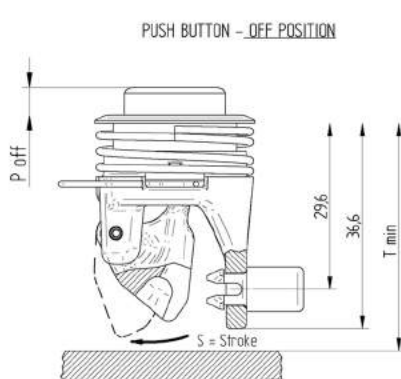
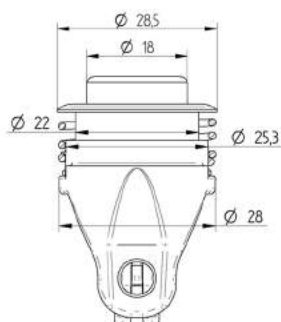


full compressed button

new



cable installed



PUSH BUTTON CLIP VERSION							Dimension (mm)	
Stroke Version	A	S = Cable Stroke	P off Position	P open Position		T min	Drawing N°	Saccon Code
				Outside	Inside			
SHORT	14	5	4,9	/	1,1	38	P-001489	PBMC5SA0
MEDIUM	13	6,5	4,9	/	1,1	39	P-001490	PBMC5MA0
LONG	14	11,5	10,1	/	0,4	39	P-001465	PBMC5LA0

mechanic PUSH BUTTON w/thread - **PBMF**

PBMF and PBMR are the thread featured mechanic push buttons

Several versions, following specific performance, are available



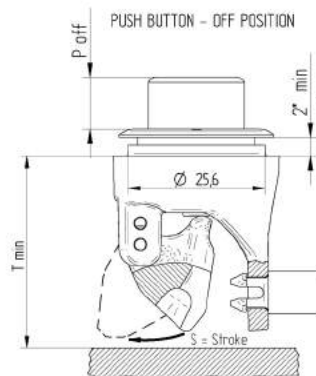
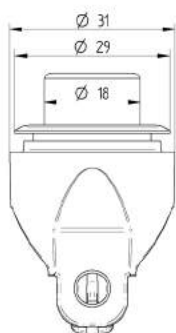
art. PBMF1LA0



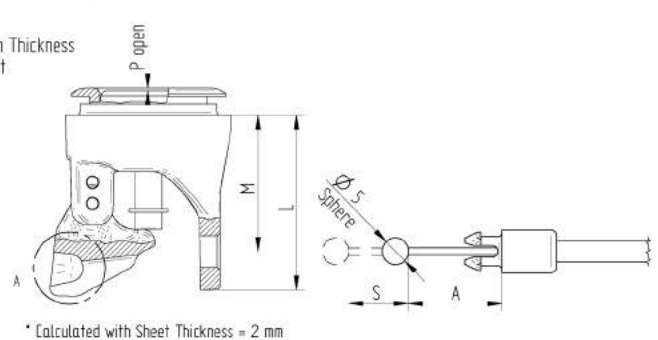
art. PBMR1SA0



cable installed



PUSH BUTTON - OPEN POSITION



full compressed button

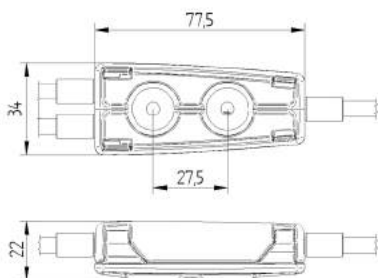
PUSH BUTTON THREAD VERSION									Dimension (mm)	
Stroke Version	A	S = Cable Stroke	P* off Position	P* open Position		L	M	T min	Drawing N°	Saccon Code
				Outside	Inside					
SHORT	18	6	6,1	/	0,4	28	20,5	30	P-001464	PBMR1SA0
MEDIUM	17,5	7,5	6,1	/	0,4	33	25,5	34	P-001520	PBMF1MA0
LONG	14.5	11.5	11.3	1.1	/	33	25.5	35	P-001480	PBMF1LA0

ADS - PROFESSIONAL duplicator



art. ADS1460

cable stroke: 30 mm



fixing fitting

adjuster
with holder



The ADS is the big professional use stroke duplicator.

The ADS could be fixed on the frame by two rivets
allows use of $\varnothing 2,0\text{mm}$ wire $\varnothing 6$ casing
performing 30mm stroke applications

USING LAYOUTS

reverse **direct**
2 levers \rightarrow 1 device 1 lever \rightarrow 2 devices



art. ADS

base type version to fix - 1 0 - ...
color black - 4 1 - 1x adjuster w/adj. holder on IN position accessories
white - 8 2 - 2x adjusters w/adj. holder on OUT positions
grey - 9 3 - 3x adjusters w/adj. holder on IN & OUT positions
5 - 3x $\varnothing 5$ casing fitting
6 - 3x $\varnothing 6$ casing fitting

ADT - DIRECT duplicator



fly version
art. ADT0420

version to fix with rivets
art. ADT1420

art. ADT

fly version - 0 0 - standard
version to fix - 1 P - only plastic parts
black (std) - 4 0 - without adjuster
white - 8 1 - with adjuster
grey - 9 2 - with adjuster and double nut (standard)



inside view:
ADT need special cable heads
the picture only show the shape of the head
the normal use must be done with sphere not on view

The ADT is a compact
direct stroke duplicator.

The ADT could be fixed on the frame
by two rivets or free to move
using it special back cover.



direct
1 lever \rightarrow 2 devices

DUAL duplicator - **ADD**

DIRECT or REVERSE use

reverse
2 levers → 1 device



direct
1 lever → 2 devices



art. ADD1420

Derived from the previous item
ADD is unioversal & dual mode duplicator
due to it special cable heads layout.



version to fix with rivets
art. ADD1420



art. ADD0420 fly version
art. ADD1420 fix version



inside view:
ADD require special cable heads
that allow reverse use as lever cable
could move free inside the body
when not activated



cable stroke: 25 mm

art. ADD

flying version - 0 version to fix - 1 black (std) - 4 white - 8 grey - 9	0 - standard P - only plastic parts 0 - without adjuster 1 - with adjuster 2 - with adjuster and double nut (standard)
--	--

ADC - CIRCULAR duplicator



The ADC could be fixed

- on cylindrical tubes with \varnothing 21, 22 and 25 mm with the use of its clamp
- on any section shaped tubes using the front fixing holes directly on the frame
- on any flat surface using the rear holes.



direct on frame
with screws, rivets
or using back holes
art. ADC001



with clamp
art. ADC201 \varnothing 22 mm

art. ADC ☐ ☐ ☐

without fixing clamp - 0	0 - without adjusters
fixing clamp \varnothing 21mm - 1	1 - with adjusters (std)
fixing clamp \varnothing 22mm - 2	2 - with adjusters w/locknuts
fixing clamp \varnothing 25mm - 5	0 - standard



cable stroke: 15 mm
20 mm max



ADL - LINEAR duplicator

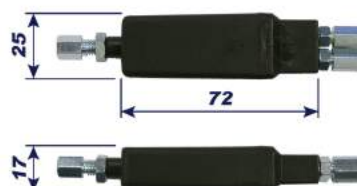


art. ADL001

art. ADL00 ☐

0 - standard
1 - with adjusters

The ADL is a stroke duplicator
Useful with gas pumps,
brakes and other devices
that are symmetrically mounted
on lot of vehicles.



cable stroke: 18 mm



direct
1 lever → 2 devices

REVERSE duplicator - **ADR**

The ADR is useful with gas pumps, brakes and other devices that are symmetrically mounted on lot of vehicles or when the same device have to be acted by two different levers.

The ADR transfers the stroke movement directly to two devices (1 lever → 2 devices) or in reverse mode (2 levers → 1 device).



reverse
2 levers → 1 device

direct
1 lever → 2 devices



The ADR could be fixed on cylindrical tubes with \varnothing 21, 22 and 25 mm with its clamp on any different frame using the back fixing holes to fix the ADR directly on place



with clamp
art. ADR101 \varnothing 21 mm
art. ADR201 \varnothing 22 mm
art. ADR501 \varnothing 25 mm



direct on frame
art. ADRV01 with screws
art. ADR001 without screws



cable stroke: 20 mm



accessories

art. ADR200 without accessories
art. ADR201 with adjusters (standard)



art. ADR ☐ ☐ ☐

without fixing clamp - 0	0 - without fittings
fixing clamp \varnothing 21mm - 1	1 - with 3 adjusters
fixing clamp \varnothing 22mm - 2	2 - with 3 adjusters w/locknuts
fixing clamp \varnothing 25mm - 5	0 - standard

FTP - DRUM brake

The FTP is the new drum brake on the SACCON systems.
Easy to fix on frames could be used either to brake or park the vehicle.
Very useful on frame with removable wheels due to its structure.



The drum, fixed on the wheel does not need any particular care when the wheels are removed.
The brake box save the internal mechanism from any damage due to frame handling.



The FTP could have lot of options that are usually studied together with the customer R&D to project the best brake system.



inside view



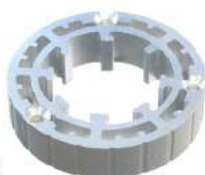
art. CFTPB0P

examples of
integration with
customer
frames



art. CFTPB0T

art. CFTPTA00
alloy drum strong shape



art. CFTPTA02
drum for custom plastic wheel



art. CFTPTA01
12 spokes plastic wheel drum



art. CFTPTA03
metal spoke wheel drum



art. CFTPTA05
drum for custom plastic wheel



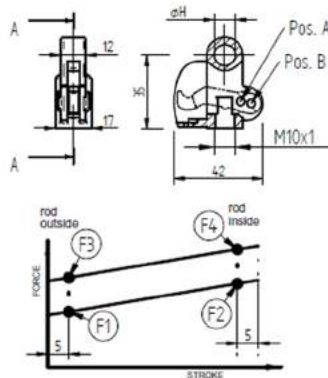
art. CFTPTA06
alloy drum light shape





Gas spring
are often used
to assist movements
on several applications.

Dampers or
locking gas springs
could be used
on every application.



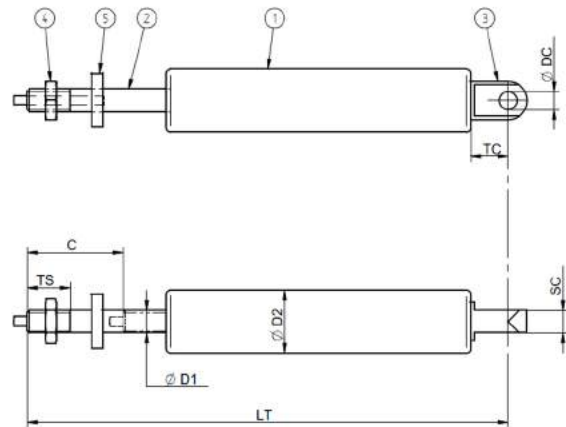
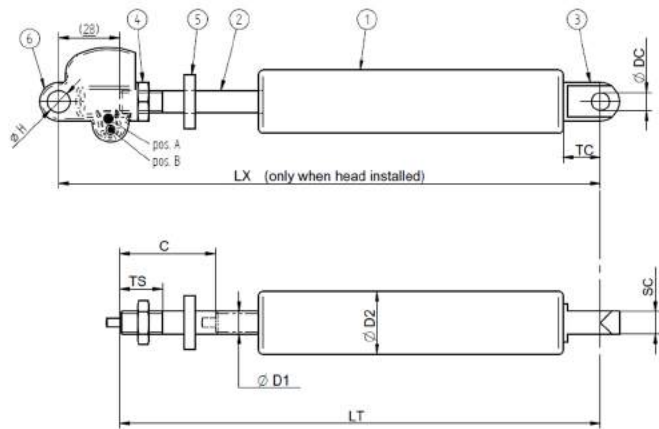
quick release head - M10x1
art. CMGTA001A ø10 pos A
art. CMGTA001B ø10 pos B
art. CMGTA002A ø8 pos A
art. CMGTA002B ø8 pos B



art. CMGTA002B
ø8 pos B



art. CMGTA001A
ø10 pos A



ITEM DEFINITION PARAMETERS									
<input checked="" type="checkbox"/> B - RIGID LOCKING					<input type="checkbox"/> E - ELASTICALLY LOCKING				
main	F (F1)		N		end fitting	TC		mm	
	LX*		mm			DC		ø	
	LT *		mm						
	C		mm		quick release head	<input type="checkbox"/> 0 - WITHOUT HEAD			
	D1		ø			<input type="checkbox"/> A - ø10 pos. A CMGTA001A			
	D2		ø			<input type="checkbox"/> B - ø10 pos. B CMGTA001B			
						<input type="checkbox"/> C - ø8 pos. A CMGTA002A			
					<input type="checkbox"/> D - ø8 pos. B CMGTA002B				
	TS		mm		color option	<input type="checkbox"/> NUT <input type="checkbox"/> PL WASHER			
	speed **		s			<input type="checkbox"/> 0 - BLACK <input type="checkbox"/> 5 - SILVER			
						<input type="checkbox"/> 9 - WHITE			
notes									
(*) define LX or LT dimension on totally open position (LX + LT = 28) use LX & Hs dimensions only with quick release head version (**) horizontal load free full stroke opening time									
item # MGB B									
internal use # 878B B									
item # definition	MGB B [F] [LT] [C] [conf] [color] [acc] [head] [fitting] [extra]								
	[conf] = M10/28 L10/22 L10/29 F8/22 C10/22								
	[color] = 0(black) 5(silver) 9(white)								
	[acc] = 0(none) 2(nut+washer) 3(nut)								
	[head] = available								
[fitting] = A(ball) B(ball) C(ball) D(ball) E(ball) F(ball) G(ball)									
[extra] = additional identification code									

accessories



art.	CLMN	CFA150	CL01265	CTR050	CFAVP53262	CTR060	CFAVP63062	CFAVP64062	CFAVP64662	CFAVP62562	M6x20	M6x35	M6x40
A	M7x15	M6x17	M5x19	M5x20	M5x20	M6x21	M6x21	M6x30	M6x30	M6(x0,75)x25	ø7	ø8	ø8
B	ø10	ø9	ø10	8	8	8	8	8	8	8	ø5	ø6	ø6
C	ø6	ø6	ø5,7	ø5,7	ø7	ø5,7	ø7	ø6	ø6	-	ø3	ø3	ø3
D	ø2,5	ø3	ø2,5	ø2,5	ø2,5	ø3	ø3	ø3	ø3	ø3			

legend: A - thread B - head dimension C - casing hole ø D - wire hole ø



Adj. Extension 1
M6(x0,75)x22
ø10x32
ø6,7/ø3

Adj. Extension 2
M6x20
8x32
ø5,7/ø2,5

Adj. Ext 2
modified
+ CTR060

Adj. ext 3
+ CTR060

Adj. Ext 2
+ CTR060

Adj. Ext 1
+ CTFVP62562

Adj. Ext 1 +
90° brass pipe
R20 ø6x1

Adj. Ext 1 +
54° brass pipe
R20 ø6x1

Adj. Ext 3 +
90° brass pipe
R17 ø6x1



ø 5,5 mm
art. CTM411

ø 7 mm
art. CTM412

ø 8 mm
art. CTM413

art. CTM401

art. CTM402



ø8x12
head ø5x6
art. CK09975

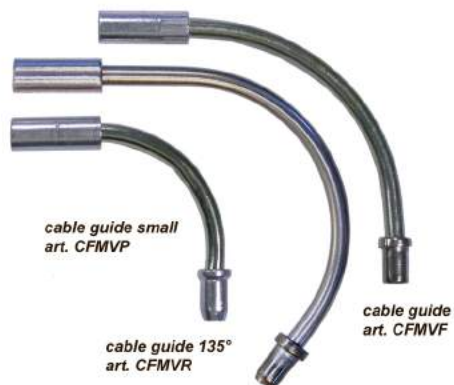
ø8x7
head ø5x4
art. CK06060

CT28

CT27

art.	CT2970	1720040		CT2440	CT2410	
A	ø7,5	ø8		ø6	ø6,5	ø7
B	25	22		13	10	8,5
C	ø5/ø2,5	ø6/ø2,5		ø5/ø1,7	ø5,8/ø2,5	ø5/ø2,5
D	ø5,6x10	ø5x9		ø4x4,5	ø4x3	ø6,1x6,5

legend: A - external ø B - total length C - casing / wire hole ø D - fixing feature



cable guide small
art. CFMVP

cable guide 135°
art. CFMVR

cable guide
art. CFMVF

art.		CY0008062	CT0005062	CT0001362	CT0001462	CT2856	
A	ø8	ø8	ø8	ø7	ø7	ø7	ø7
B	20	16	20	18	17	17	25,5
C	ø5/ø2,5	ø6/ø2,4	ø5/ø2,5	ø5/ø1,8	ø5/ø2	ø5,5/ø2,5	ø5,3/ø2,3
D	ø5x2	ø4,9x2,2	ø5,5x3,5	ø3,6x3	ø4x2	ø5x2,5xø6	ø4,2x5,5

legend: A - external ø B - total length C - casing / wire hole ø D - fixing feature



safety device
art. ASF000

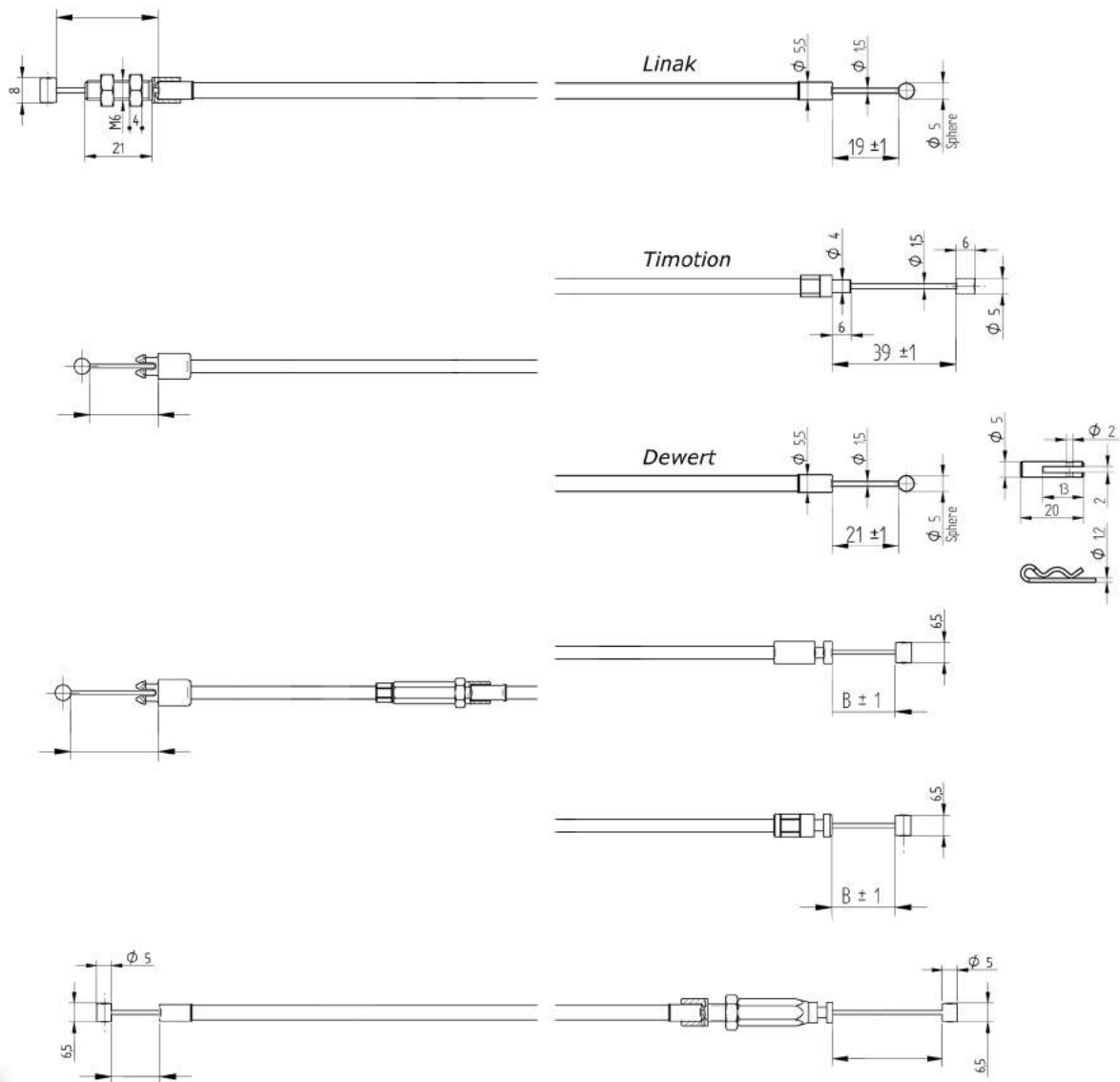
safety device
art. ASR000



ELECTRICAL SWITCH COVER



ELECTRICAL SWITCH
art. MLASNA001 NO switch
art. MLASNC001 NC switch



1 2 3 4 5 6 7 8 9 10 11 12 13 14 15 16

others

Mechanical adjustable positioning device
easy to unlock by remote cable actuator



Button Handle
art.MRP1F600 M6 female
art.MRP1F800 M8 female
art.MRP1M825 M8x25 male
art.MRP1M835 M8x35 male



quick release pivot
art.CMGK1050 $\varnothing 10 \times 50$
art.CMGK1040 $\varnothing 10 \times 40$



adjuster
with extension



fixi fitting



adjuster
with holder



quick release pivot "C"
art.CMGK0845C $\varnothing 8 \times 45$

notes



Sacson

SACCON srl
via del Lavoro, 26
31013 Codogné (Treviso) - Italy

tel. +39.0438.778151
fax +39.0438.778145

sacson@sacson.it
www.sacson.it